

AFTER SALES SERVICE | SPARE PARTS

# TURBO TECHNIK



GLC

CERTIFIED

ISO 9001

SCC\*\*



# Introduction

A 2700 TEU Container vessel during a float repair work at the Turbo-Technik Pier in Wilhelmshaven.

**SERVICE  
24/7  
WORLD-WIDE**

Turbo-Technik was established in Wilhelmshaven, Germany, in 1967 as a ship repair company for voyage and port repairs of seagoing vessels.

The gained experience has led to a broad diversification and comprise today:

- specialized in merchant ship repairs, ranging from world-wide voyage and port repairs to conversions, after sales service for major marine equipment and machinery manufacturers spare parts supply.
- repairs and maintenance of international naval vessels, technical upgrading, refit and modernisation
- service, repair and construction of industrial plants as well as in the field of renewable energy, engineering and construction of modules, machinery equipment, steel construction and contract manufacturing.

With modern, only recently constructed facilities Turbo-Technik enjoys a world-wide reputation for reliability when quality, in time delivery and budget guarantee count.

Numerous international leading marine machinery and equipment manufacturers have appointed Turbo-Technik with its after-sales-service and spare parts supply.

The makers trained Service engineers are available world-wide for inspection, service and repair. Spare parts can be reconditioned cost effectively according to Makers' standard on short notice in our workshop.







**MITSUBISHI Heavy Industries Ltd.**  
Japan

**METurbo**  
MITSUBISHI HEAVY INDUSTRIES, LTD.

- Maintenance/overhaul and inspection of MET turbocharger series world-wide
- Overhaul and inspection of main turbines and turbo generators
- Reconditioning/reblading and dynamic balancing of turbine rotors
- Reconditioned turbine shafts and turbine blades available
- World-wide spare parts supply



**MITSUBISHI Heavy Industries Ltd.**  
Japan

- Maintenance and repair of main and auxiliary engines, world wide
- Overhaul/reconditioning of engine components
- Warehouse storage available
- World-wide spare parts supply



**MITSUBISHI Deck Cranes**  
Japan

- Maintenance/inspection and overhaul of knuckle crane, hose handling crane, single and twin crane
- Reconditioning and overhaul of hydraulic pumps and parts
- Load test for all ship cranes
- World-wide spare parts supply



**KEMEL** KOBELCO Eagle Marine  
Engineering Co. Ltd.  
Japan

- Supervision of removing and installing of propeller shaft
- Modification/conversion of shaft seal system to shaft air seal
- Bonding of bulb sealing rings during dry docking and a float
- Assembling of the sealing units in workshop
- Oil pressure test and commissioning after replacing of sealing rings
- A float repair of shaft seal components
- Conversion of existing shaft system to Kemel Kobelco shaft sealing system
- World-wide spare parts supply



 **HYOSUNG**

- Inspection/maintenance and supervision service for industrial pumps and marine cargo pumps
- Sale of components and world-wide spare parts supply



 **GTT**

### LNG Ships Cargo Containment System Repair Service

Turbo-Technik has signed a Technical Service Agreement with Gaztransport and Technigaz (GTT) and is as such licensed to carry out repair work and maintenance of membrane cargo tanks.

Our service teams are trained for repair of the following GTT cargo containment systems:

- "Gaztransport" NO 85, NO 88 and NO 96
- "Technigaz" MARK I and MARK III

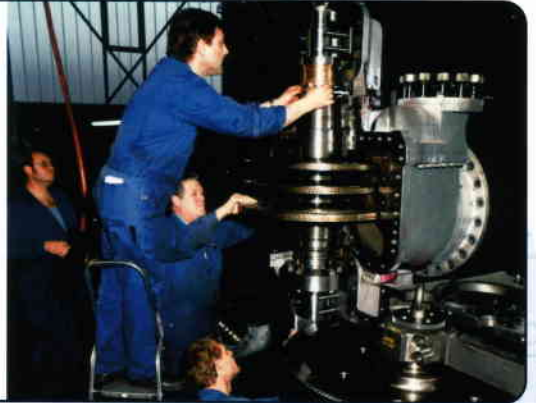






**SHINKO** Machineries Ind. Ltd.  
Japan

- Supervision/maintenance and overhaul of LNG cargo and spray pumps
- Overhaul and reconditioning of all Shinko parts
- Reblading and dynamic balancing of turbines and pump units
- Maintenance/inspection and overhaul of turbo generator, cargo oil pump turbine, cargo oil pumps, ballast water pumps and boiler feed water pumps.
- World-wide spare parts supply



- Maintenance/inspection and supervision service for 2 stroke engines.
- Maintenance/inspection and supervision service for 4 stroke Himsen Engine.
- Overhaul of diesel engine parts and components.
- Reconditioning of engine components, cargo oil pumps and turbines storage in our warehouse available.
- Maintenance/inspection and overhaul of side thruster
- World-wide spare parts supply.



## **World-wide spare parts supply • Large stock of reconditioned spares Service engineers available world-wide • Technical back up service**

Our makers trained service engineers and technicians are available on short notice for world-wide supervision, inspection, overhaul and repair of marine machinery equipment. Our technical back up service assists shipowners and shipyards in emergency cases or operational failures with immediate advice to minimize damages and offers cost- and time-efficient solutions.

Fleet agreements for service, spare parts supply and storage of owner's spares in our bonded warehouse available.

**Reconditioning of spare parts according to makers instructions,  
manufacturing according to samples or drawings in modern machinery workshop.**





# TURBO TECHNIK

*Reparatur-Werft GmbH & Co. KG*

## Head Office

Hannoversche Straße 11  
26384 Wilhelmshaven  
Federal Republic of Germany  
Telefon +49 4421-3078-0 (24 hrs)  
Telefax +49 4421-305086  
[info@turbotechnik.com](mailto:info@turbotechnik.com)  
[www.turbotechnik.com](http://www.turbotechnik.com)

## Branch Office

Alstertwiete 5  
20099 Hamburg  
Federal Republic of Germany  
Telephone +49 40-2 80 10 55  
Telefax +49 40-2 80 33 96  
[hamburg@turbotechnik.com](mailto:hamburg@turbotechnik.com)  
[www.turbotechnik.com](http://www.turbotechnik.com)