

# TURBO TECHNIK

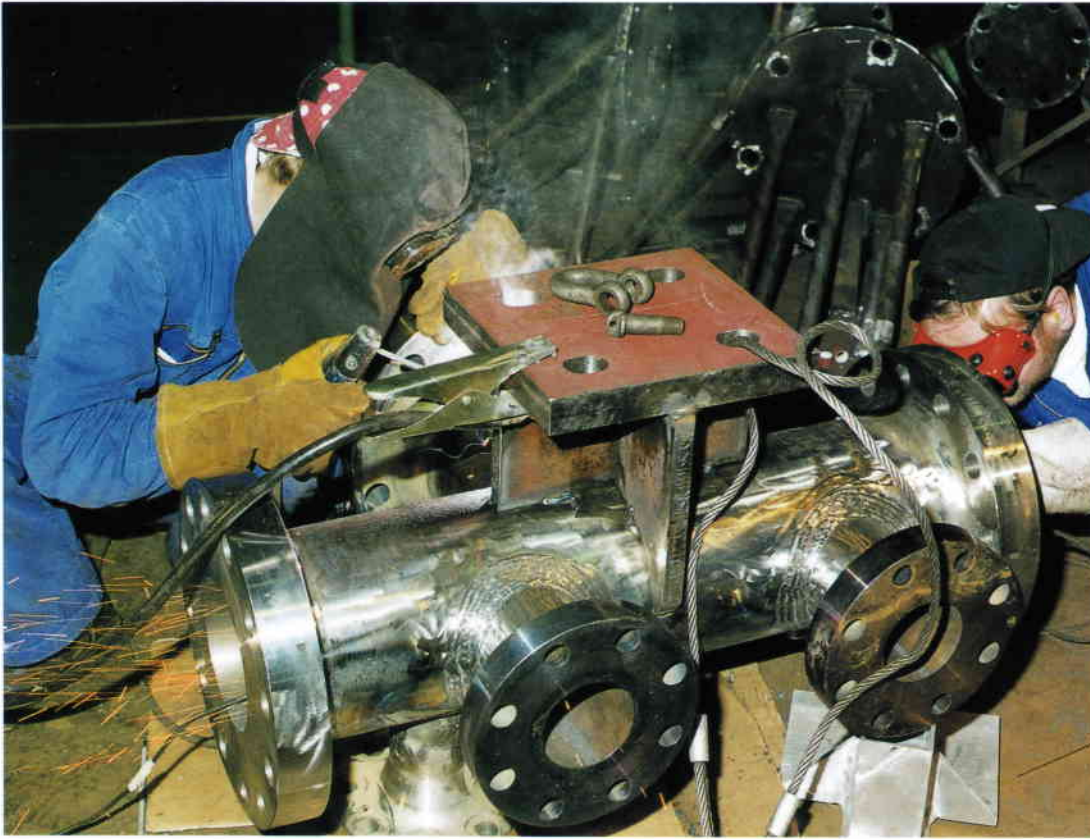


GLC

CERTIFIED

ISO 9001

SCC\*\*



### **Boiler Components:**

Fabrication of a **SH outlet Steam Manifold** for the main boiler of a steam driven passenger ship.

The new manifold was made of solid material 13 CrMo 4 4 DIN 17175 (1% Cr – 0,5 % Mo steel forging), as a welded construction on top urgent delivery terms to replace the damaged original manifold of cast steel material, class LRS



### **Boiler repairs**

Rebuilding of an exhaust gas boiler with prefabricated sections of finned tubes to minimize overall repair time

## **World-wide Boiler Service**

### **Inspection – Fabrication – Repairs**

Inspection surveys, utilizing high-tech equipment, such as video bore scope, portable hardness tester, U.S. wall thickness measurement with special heads for small tubes.

### **Boiler repairs - Material**

Fabrication of pressure parts, manipulation of tubes, fabrication of membrane wall sections, economiser sections, SH tube panels. Fabrication of complete replacement units, or suitable sized sections for economical installation on board depending on actual access conditions.

**Leave it all in our hands**



**Steam drum repair:**  
Machining tool for boring the penetration for renewal and welding of new down comer tube stubs

• **Navy Destroyer Boiler - Repair** • CE DDG 28-30

**SH retubing:**  
Fitting of prefabricated super heater tubes, annealing of welds immediately after completion of welding and x-ray testing

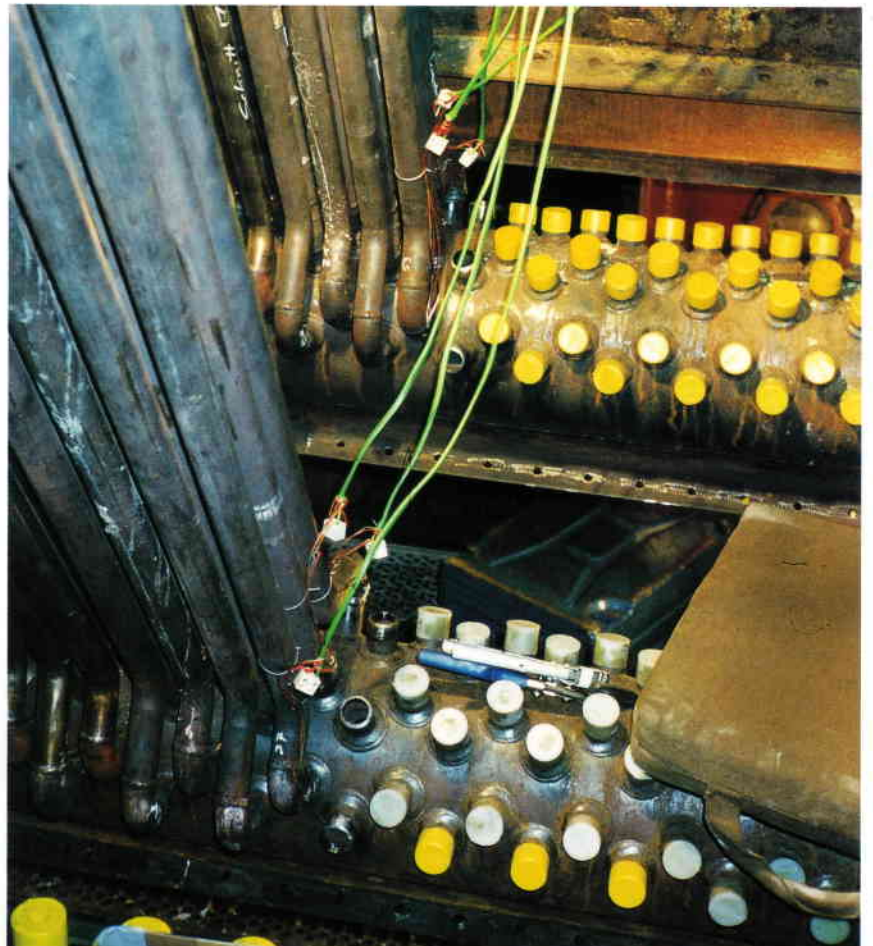
**for more than 30 years**

Major sizes of boiler tubes available ex stock.

**Boiler Repairs – Installation**

Repair work on board by highly skilled boiler makers and welders, including the provision of well-ried boiler tools for every special job, and necessary testing equipment. Refractory and insulation will be restored as required. Performance of voyage repairs with riding squads or at any shipyard or repair berth world-wide, as best suited to the ship's schedule.

Reference list can be provided.



**for a turnkey job**



**Exhaust gas boiler fabrication:** Plain tube type exhaust gas boiler, weight 60 tons, during completion. The unit was designed and made to replace a totally burnt exhaust gas boiler of finned tubes on same outer dimensions and connections for a turnkey and easy refit

**Boiler inspection service:** Demonstration of Videoscope equipment used for tube and pressure parts internal inspection.

12  $\varnothing$  mm diameter probe head on 12 m long flexible cable, directed to all positions from outside, with portable monitor and recorder for condition reporting for world - wide inspection service.





Prefabrication of economizer section



Right side: Exhaust gas boiler, double stack, finned tubes, for passenger liner.

Left side: Auxiliary boiler with horizontal furnace and vertical smoke tubes for container ship.



Exhaust gas boiler TT – AG 3.7  
Plain tube type  
Evaporation 3700 kg/h  
Working pressure 9.0 bar



Auxiliary boiler for container ship, fabrication of entire pressure parts as per sample for replacement on board during a five days regular docking.



Prefabricated main bank tubes packed in crates for sea freight transport to the ship in the Arabian Gulf





Chemikalien Tanker auf dem Weg zu Turbo-Technik für Umbau- und Wartungsarbeiten.  
 Chemical tanker heading for Turbo-Technik for conversion and maintenance work.

© Grafik Design: www.proffis-in-design.de | Fotos: www.foto-design-schreiber.de

Service agreements with following companies, spare parts supply.



# TURBO TECHNIK

Reparatur-Werft GmbH & Co. KG

## Hauptsitz und Fertigungswerkstätte

### Head Office

Hannoversche Straße 11  
 26384 Wilhelmshaven  
 Federal Republic of Germany  
 Telefon +49 4421-3078-0 (24 hrs)  
 Telefax +49 4421-305086  
 info@turbotechnik.com  
 www.turbotechnik.com

## Betriebsstätte

### Branch Office

Alstertwiete 5  
 20099 Hamburg  
 Federal Republic of Germany  
 Telephone +49 40-2 80 10 55  
 Telefax +49 40-2 80 33 96  
 hamburg@turbotechnik.com  
 www.turbotechnik.com